

# UTAS Multifocal/Pattern System

*The most comprehensive system for testing the retina, optic nerve, and visual cortex*





## SIMPLE TO USE

Automatic cursor placement

Small footprint & portable

Simple user interface with powerful testing/reporting features

High-quality LCD monitor carefully selected and driven in a manner to clinically eliminate flash artifacts

Real-time calibration of the LCD monitor delivers consistent quality throughout testing

Reliable Ultra Low-Noise Digital Amplifier (UBA) makes downstream noise coupling impossible. No need for shielding and separate grounding



## VERSATILE

Widest range of fully ISCEV-compliant multifocal ERG/VEP and pattern ERG/VEP test stimuli and reports

Export PDF for electronic medical records or raw data (.CSV format) for research



## MULTIFOCAL TESTING

Multifocal testing using long m-sequences and sophisticated artifact rejection methods provides clean waveform results

Redesigned multifocal signal processing incorporates Erich Sutter's published methods to allow for consistent comparisons and system migration path

## mfERG

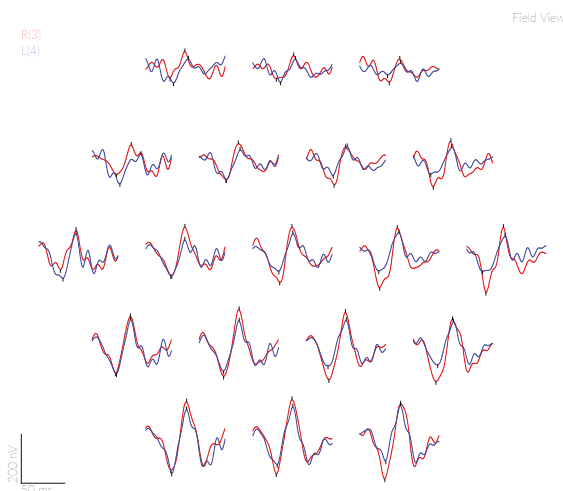
Stimulus types: 19, 61, 103, 241 hexagons

Report types: Trace Arrays, Amplitude & Time, 3D plot, and Region/Ring Ratios

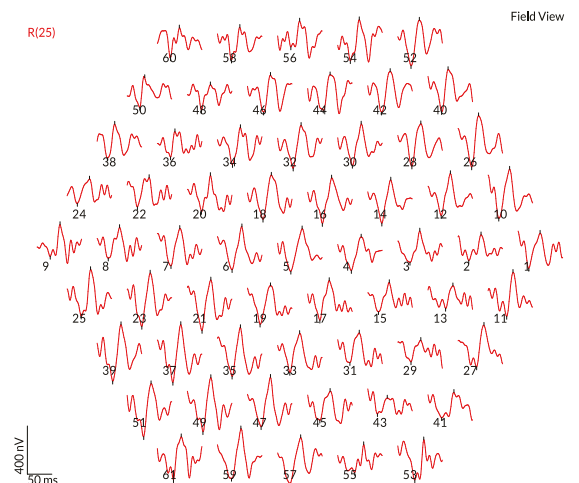
Multi-channel recording allows for bilateral testing

Average multiple tracings for reduced noise and improved recordings

### mfERG 19-hex Trace Array



### mfERG 61-hex Trace Array



## mfVEP:

Stimulus types: 4, 16, or 60 wedges  
with pattern sectors

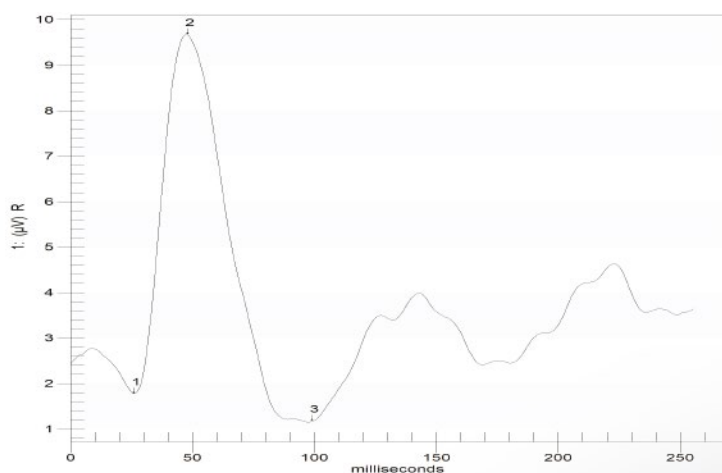
Report types:

- Trace Array
- Overlapped interocular comparison
- Regional average waveform display



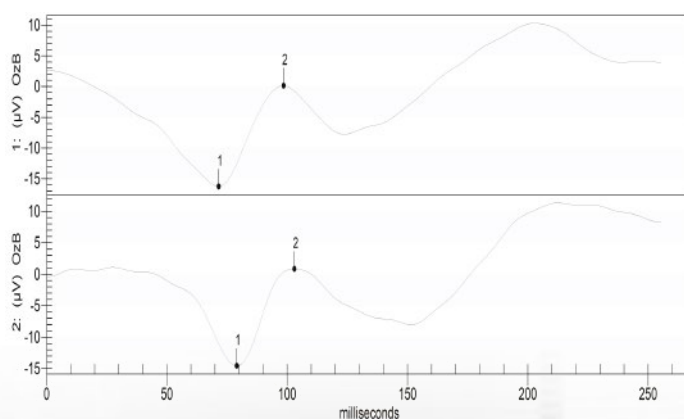
## PERG

- Bilateral testing capable
- Custom protocols available



## PVEP

- Bilateral testing capable
- Custom protocols available







## USE ANY ELECTRODE

Any type of electrode can be used with the UTAS multifocal/pattern system, including DTL electrodes



## COMPACT

Small footprint (24" x 26") portable cart with retractable integral chin rest, mounting for all system components, and locking 4" casters for ease of movement

Combine with RETeval® handheld ffERG/VEP to complete your testing system.

